


Westtown Metropolitan District


Parking and Road Ownership

Map Legend

 Westtown Parcel

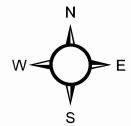
Road Type

 City Street

 Non-City Street

 Parking

 Alleyway

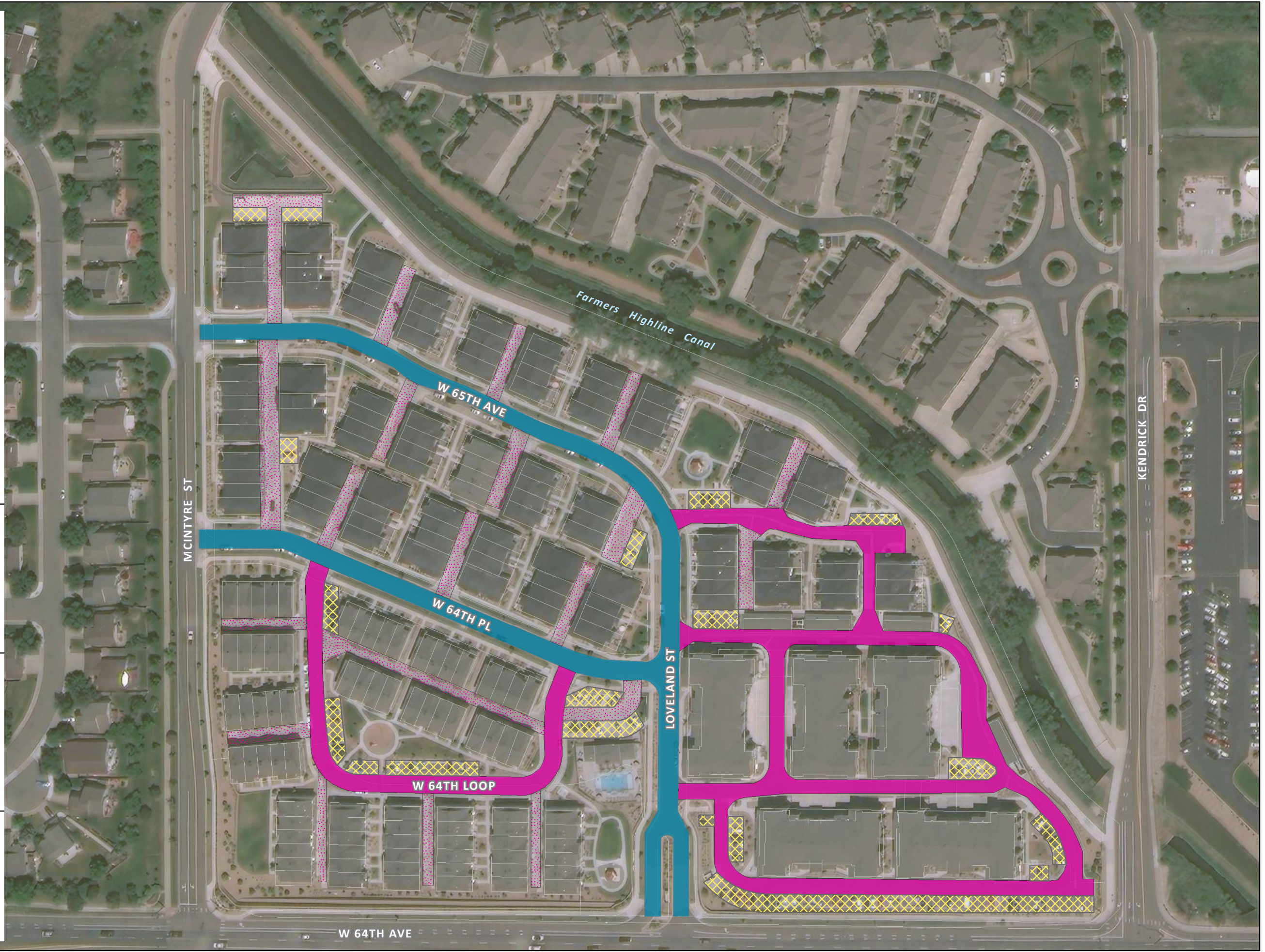


0 125 250 Feet



TIMBERLINEDISTRICT
CONSULTING

Date: March 10, 2022
Sources: Jefferson County Assessor, ESRI
World Imagery (June, 2021)
Prepared by:



W 64TH AVE